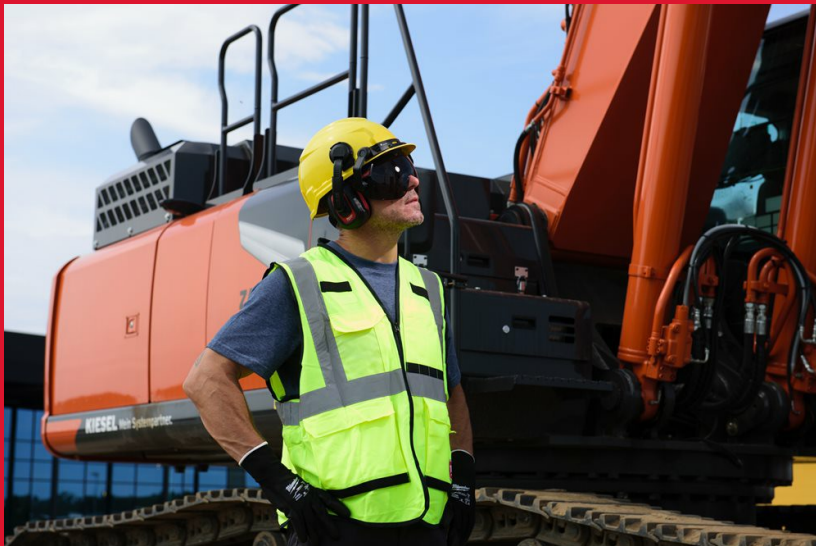




BOLT™ 100 Yellow Unvented

BOLT™ 100

- BOLT™ system – ensure compatibility among a large range of accessories with an easy and intuitive attachment system.
- Extremely comfortable and easy to adjust wheel ratchet adjustment system.
- Shell made of ABS for light weight.
- 6 points suspension for more comfort.
- Changeable and comfortable sweatband.
- Size: 52 - 68 cm.
- 8 colours available with glossy finish: white, yellow, orange, red, black, green, blue and high visibility yellow.
- Certified as per EN 397:2012 with optional requirement for Multi Metal, extreme temperatures -30°C, Lateral Deformation, and Electrical insulation 440 V a.c. (electrical insulation 440V under EN397 just on the unvented version).
- Certified as per EN 50365:2002 Electrical class 0 for installations with nominal voltage up to 1000V A.C. and 1500V D.C. in vented and unvented version.



Vented	Unvented
Description	Article Number
Standard and rating	Description
Article Number	Standard and rating
BOLT™100 White Vented - 1pc	4932478122
EN 397; MM; LD; Extreme temperature -30°C; EN 50365	BOLT™ 100 White Unvented - 1pc
4932479246	EN 397; MM; LD; 440V; Extreme temperature -30°C; EN 50365
BOLT™100 Yellow Vented - 1pc	4932478913