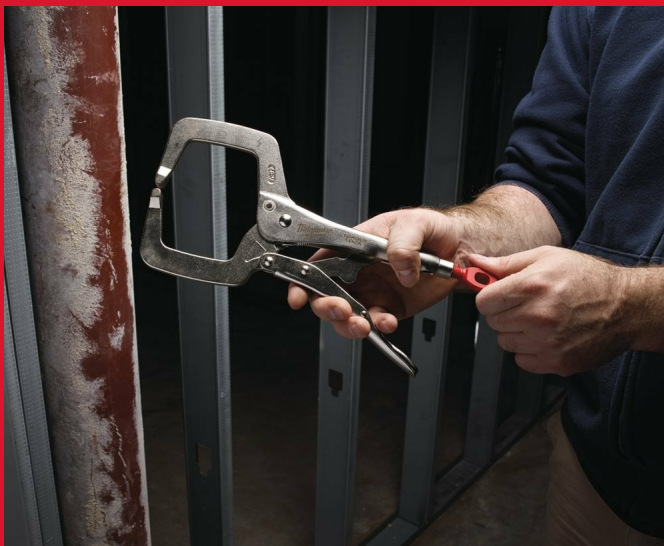


# 18" C clamp with regular jaws

## TORQUE LOCK™ LOCKING C CLAMPS

- TORQUE LOCK™: Faster set up and easy release when clamping flat and round materials for welding. Extra force can be applied to the TORQUE LOCK™ screw for better and more secure grip. Can also be used for hanging / storage purposes.
- Hardened jaws: Better grip force on jobsite material.
- Rust protection: Chrome plated tool increases life by reducing corrosion.
- Lever release design: Traditional release lever for jobsite convenience.



Article Number	4932472260
Jaw capacity flat [mm]	170
Jaw type	Regular pointed pads
Pack quantity	1
Total length (mm)	480
Total length [inch]	18